

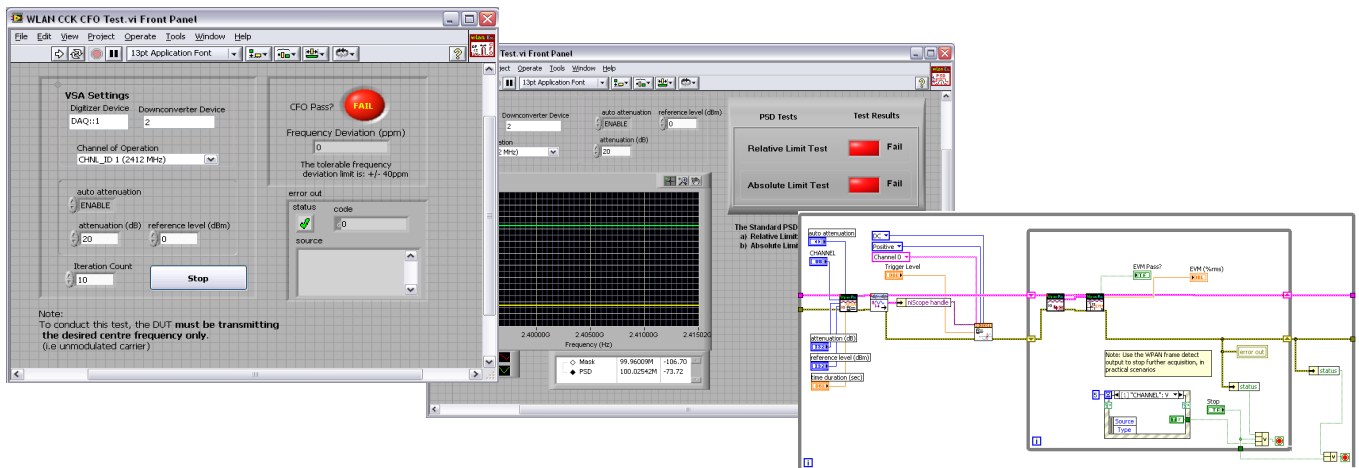


## Overview

WLAN LabVIEW API Toolkit packages all of the WLAN signal generation, signal analysis and compliance testing solutions into LabVIEW VI's. The toolkit includes Configure, Acquire and Measurement VI's which offer great accuracy and speed.

The testing can be done at the RF or at the Baseband level and the Control of the test setup is handled through RF parameters such as trigger, attenuation, and power levels.

With WiLANTA Toolkit the design or production engineers can accelerate the development and validate the complex 802.11b/g systems. A highly efficient production testing environment can be created which gives pass/fail results. WiLANTA Toolkit is intended for use in precertification of WLAN Chipset or equipment or WLAN cards.



### Transmitter Tests

- Spectrum PSD Mask
- Error Vector Magnitude
- Transmit Power
- Transmit Center Frequency Tolerance
- Transmitter Power Ramp Up
- Transmitter Power Ramp Down

### Receiver Tests

- Receiver Sensitivity
- Maximum Input Power
- Adjacent Channel Jamming Resistance
- Alternate Channel Jamming Resistance

### Transmitter Test Configuration

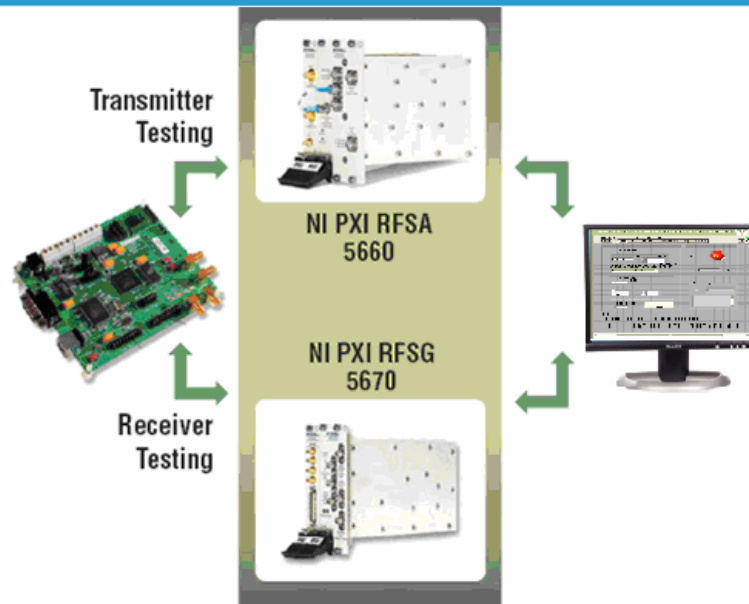
- Configure Attenuation level
- Configure Reference level
- Configure hardware settings
- Configure Trigger
- Channel of Operation

### Receiver test Configuration

- Configure Power level
- Configure hardware settings
- Channel of Operation
- Configure packets for transmission



# WLAN Toolkit



## Save on Testing cost

The WLAN LabVIEW API Toolkit is based on the powerful PXI platform with NI PXI 5660 RFSA and NI PXI 5670 RFSG. This low-cost platform with WLAN Toolkit provides one of the most optimized platform to perform 802.11b/g test and measurements.

This combination is ideal for decreasing test times and minimizing investment

## Tested For Speed

The WLAN LabVIEW API toolkit Solution is designed to minimize measurement times thereby reducing the overall test time. The following are typical individual test times

- Centre Frequency Tolerance Test < 360 ms
- PSD Test < 126 ms
- Transmit Power Test < 172 ms
- Transmit Power Ramp Up < 150 ms
- Transmit Power Ramp Down < 150ms

### Headquarters

SeaSolve Software Inc  
1798 Technology Dr. Suite 139  
San Jose, CA 95110  
Toll Free : 1-866-WiLANTA (1-866-945-2682)  
Phone : 408-437-9306  
Fax : 408-437-9320

### Asia Pacific Office

#104, 1st Main Road,  
5th Block Koramangala  
Industrial Area Bangalore 560095  
Karnataka, India  
Ph: +91-80 40105200  
Fax: +91-80 40105300

### Europe Office

23, Vista Centre  
50, Salisbury Road  
Hounslow  
TW4 6JQ  
United Kingdom  
Ph: +44 (0) 20 8538 0158  
Fax: +44 (0) 20 8538 0273

